

Reference

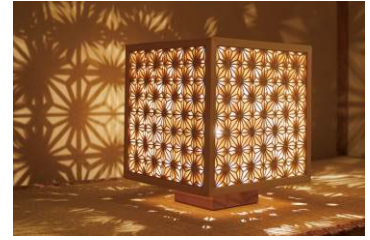
Model companies participating in the collaborative design project.



Ibasen
(Edo-style uchiwa and sensu fans)



Kimoto Glass Tokyo
(Edo-style kiriko cut glass and glassware)



Tatematsu
(Edo-style kumiko woodworking)



Chikusen
(yukata and dyeing patterns)



Hanashyo
(Edo-style kiriko cut glass)

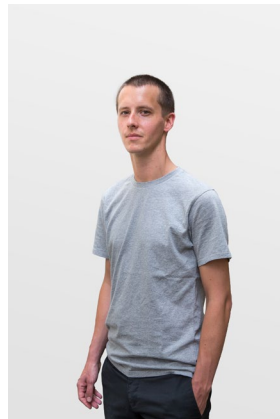


Marukyu
(chusen-dyed items)

Designers from the Bureau du Design, de la Mode et des Métiers d'Art (BDMMA)



Jacques Avena



Nelson Fossey



AC/AL